



Co-funded by the
Erasmus+ Programme
of the European Union



Development of practically-oriented student-centred education in the field of modelling of Cyber-Physical Systems – CybPhys

609557-EPP-1-2019-1-LV-EPPKA2-CBHE-JP – ERASMUS+ CBHE

SMSE progress

March 21st 2022

**Alexandr Drozd
CPNU**



Co-funded by the
Erasmus+ Programme
of the European Union



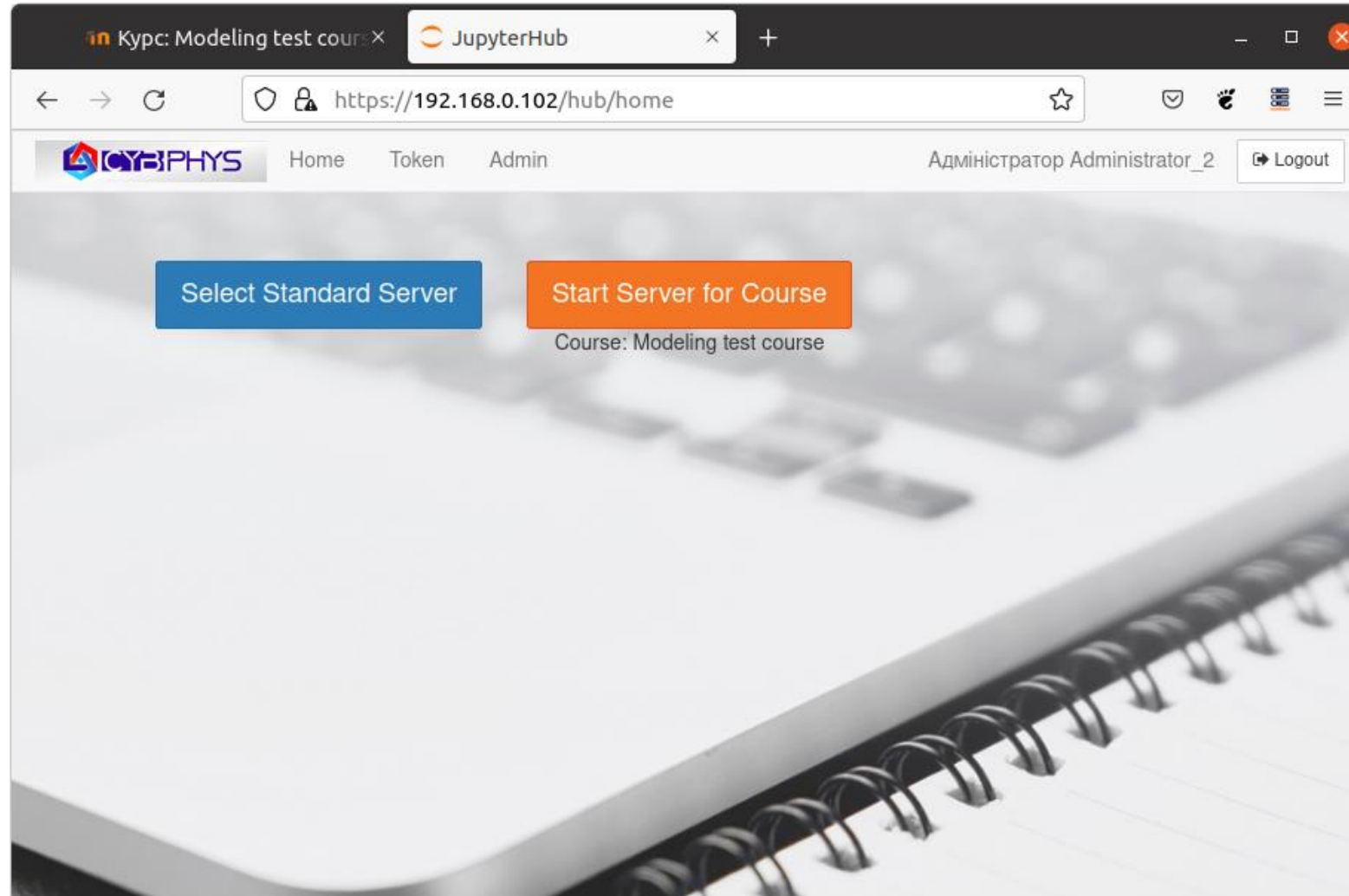
Link to SMSE

In Moodle course select the link to SMSE

The screenshot shows a web browser window displaying a Moodle course page. The browser's address bar shows the URL `cnut/course/view.php?id=7`. The page title is "Modeling test course". The left sidebar contains a menu with items: "tcourse", "Participants", "Badges", "Competencies", "Grades", "General", "Topic 1", "Topic 2", "Topic 3", and "Topic 4". The main content area displays the course title "Modeling test course" and a breadcrumb trail "/ My courses /". Below this, there is a list of course activities: "SMSE_jupyter" (highlighted with a red circle), "News", "Quiz", and "feedback". The user is logged in as "Адміністратор Administrator".

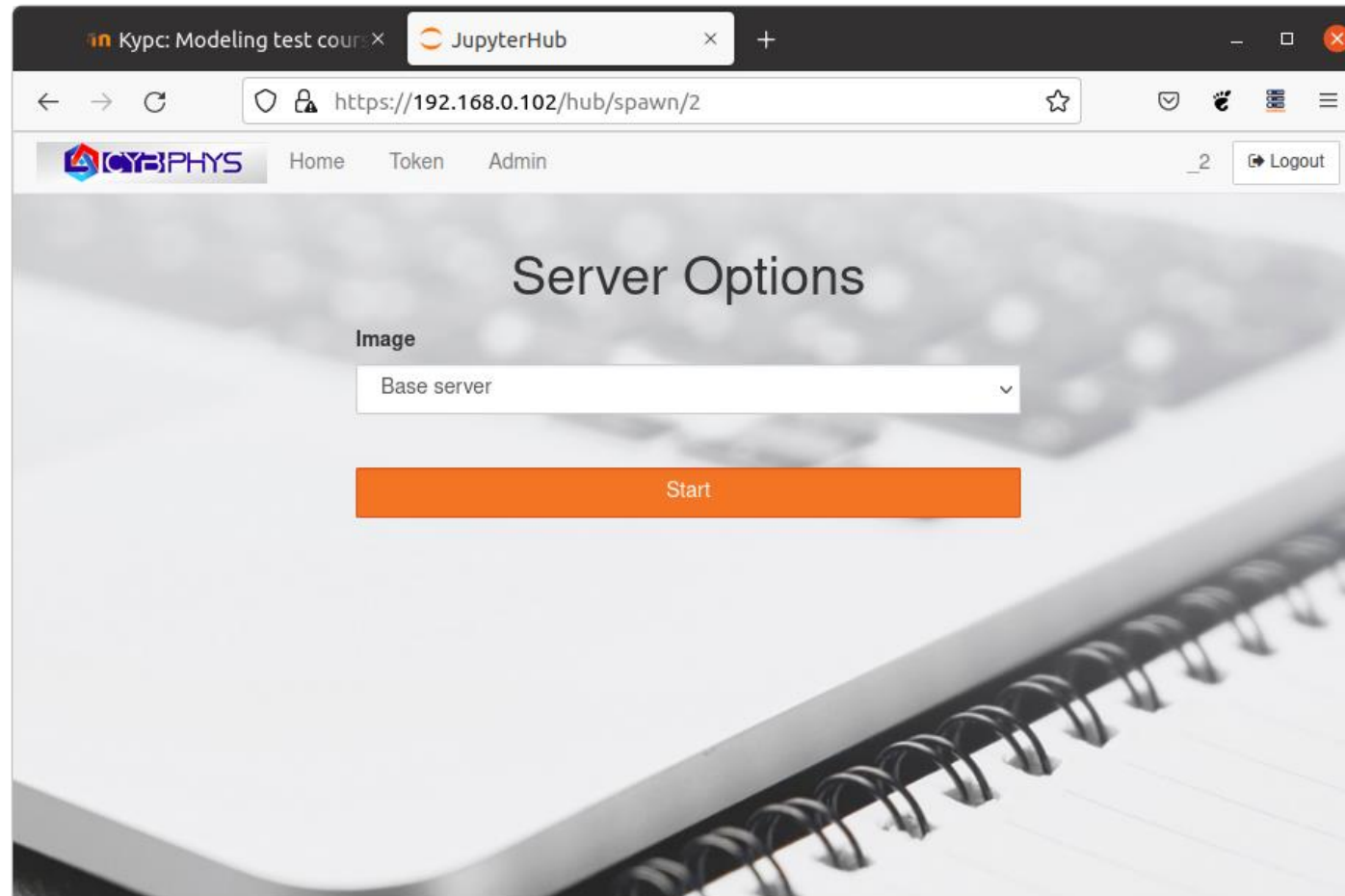
Select type of server

Select one of Base (Standard) Server or special server for Moodle course



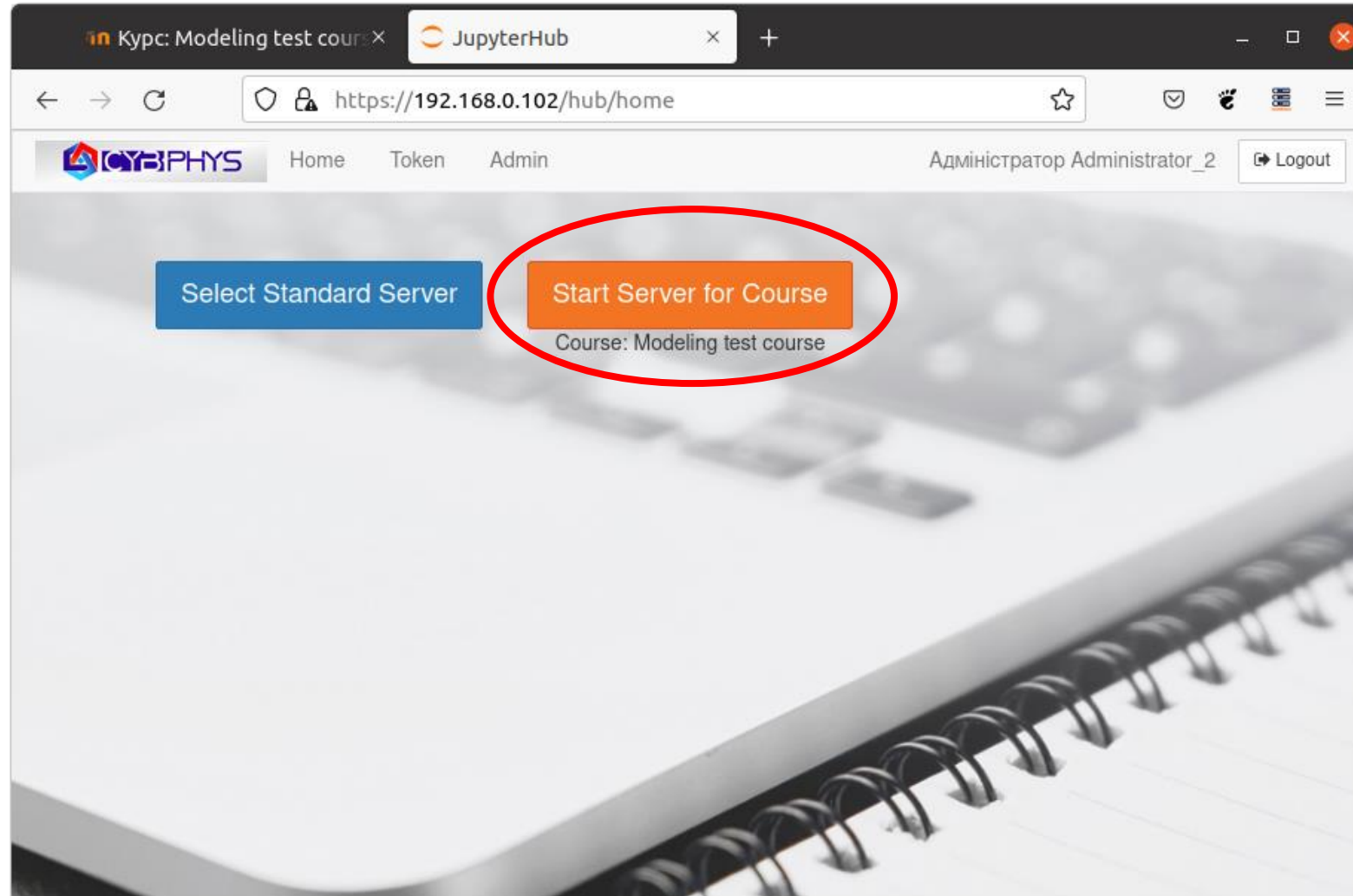
Variant 1: Base (Standard) server

We can prepare multiple base server images with different tools



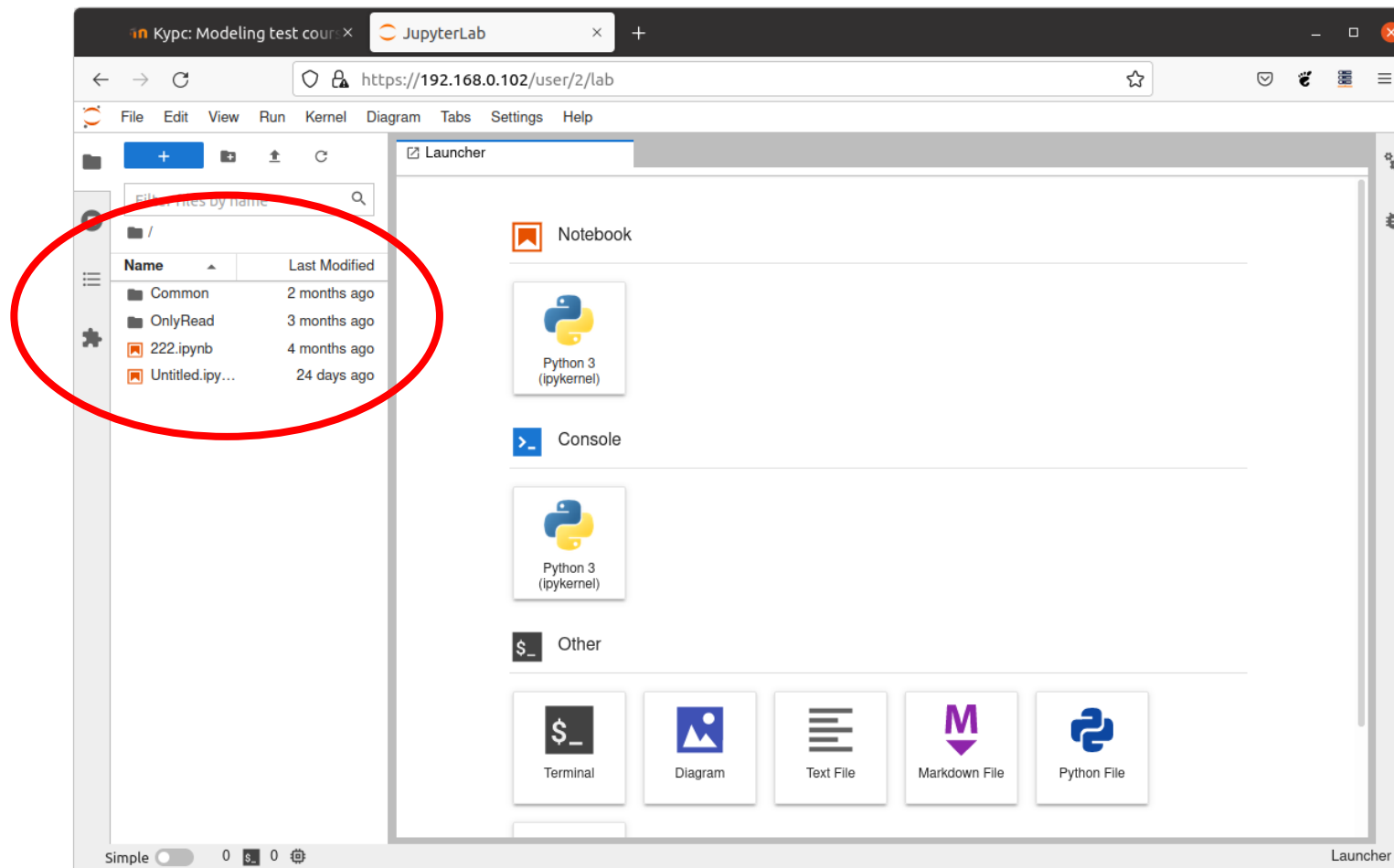
Variant 2: Special server for Moodle course server

Also, the administrator can prepare a special server image for the Moodle course



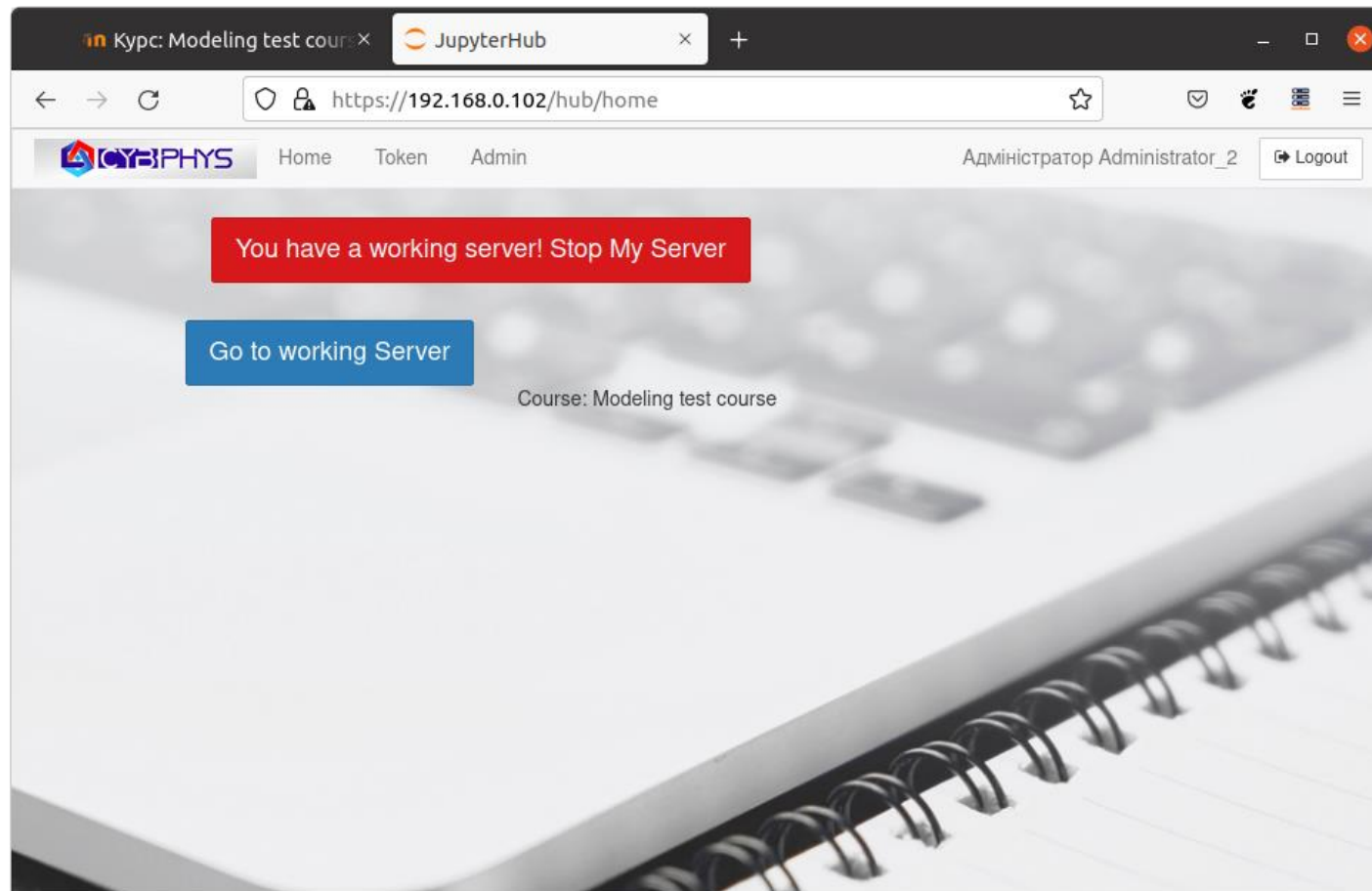
User data

In any server, the user always has access to his data. There is also access to shared data. Shared data may be protected



Stop server

A user can work only with one server at a time. If you close the browser with SMSE page, the server remains running. If you go back to SMSE, you can either continue working with the old server or stop it.





Co-funded by the
Erasmus+ Programme
of the European Union



Thank you for your attention