



Co-funded by the
Erasmus+ Programme
of the European Union

Chernihiv Polytechnic National University



Erasmus+ project 609557-EPP-1-2019-1-LV-EPPKA2-CBHE-JP
“Development of practically-oriented student-centred education in the field of
modelling of Cyber-Physical Systems”, Acronym “CybPhys”

Online meeting 4, July 2022



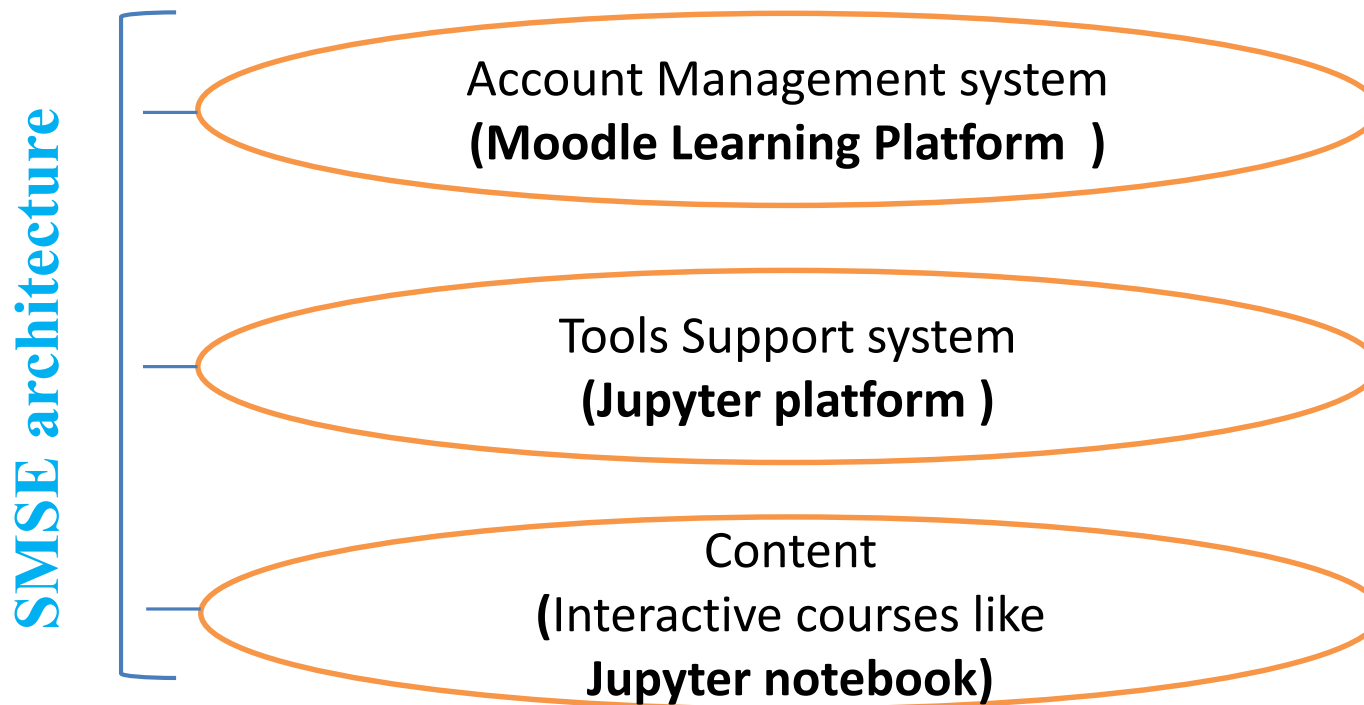
Co-funded by the
Erasmus+ Programme
of the European Union

SMSE progress

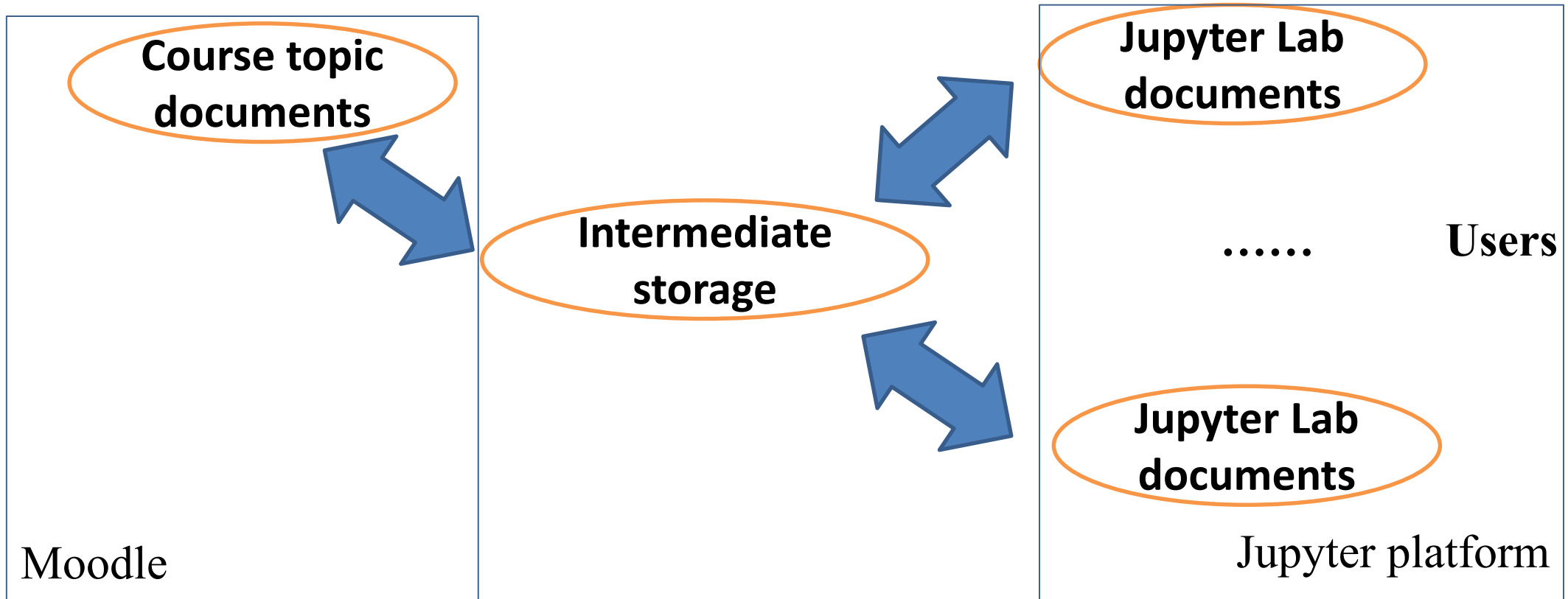
- 1. SMSE development**
- 2. SMSE manual development**

SMSE architecture

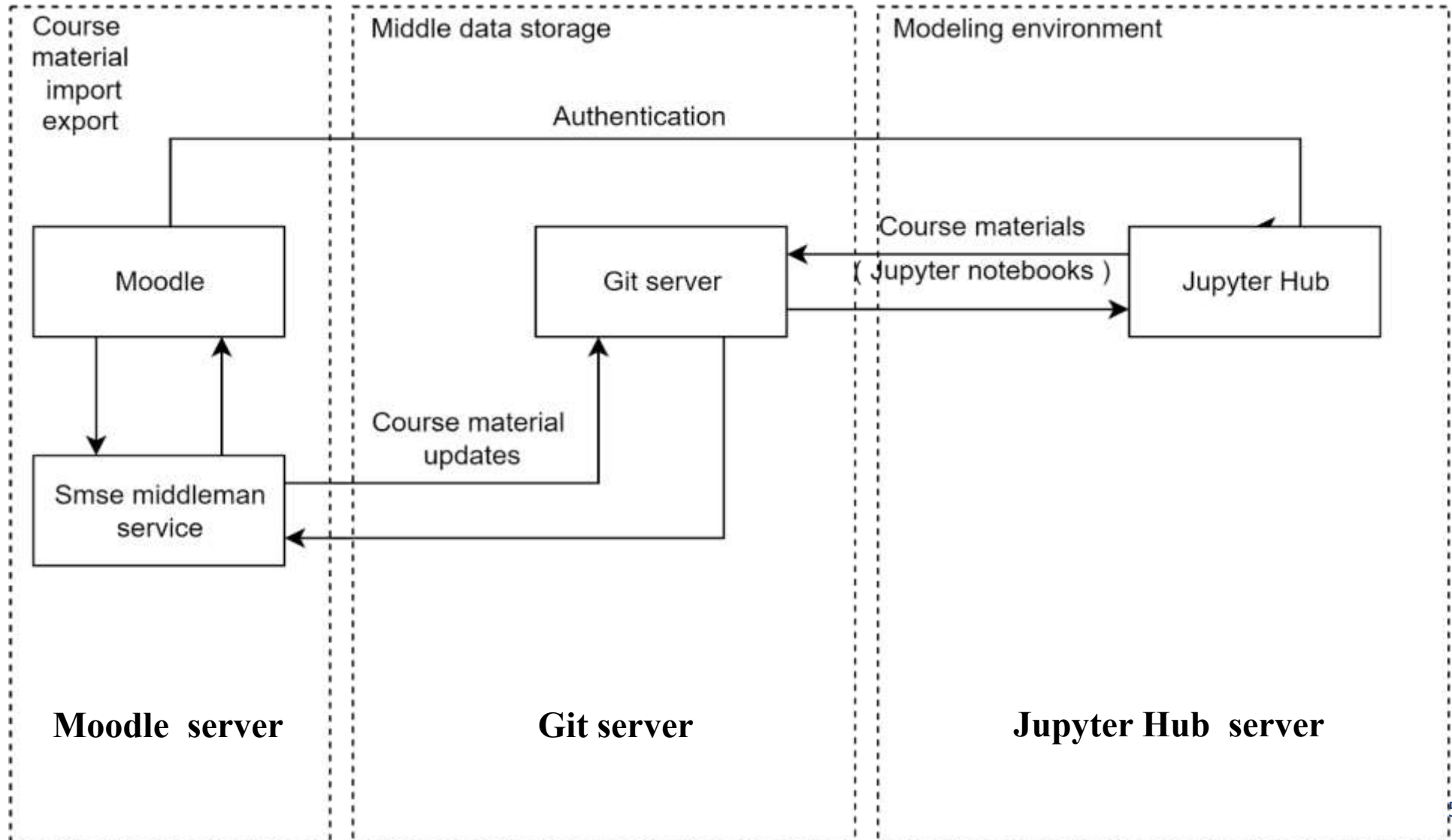
Main idea and task – embedding Jupyter platform to Moodle



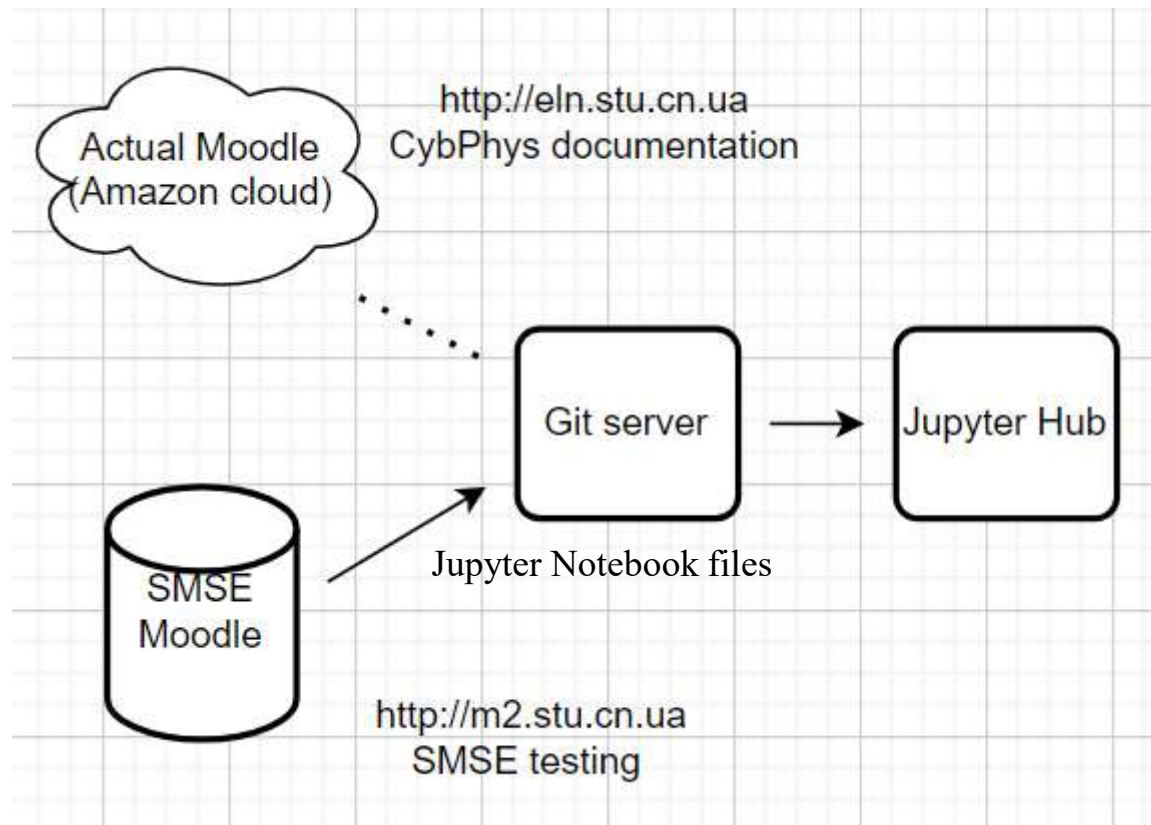
SMSE data flow diagram



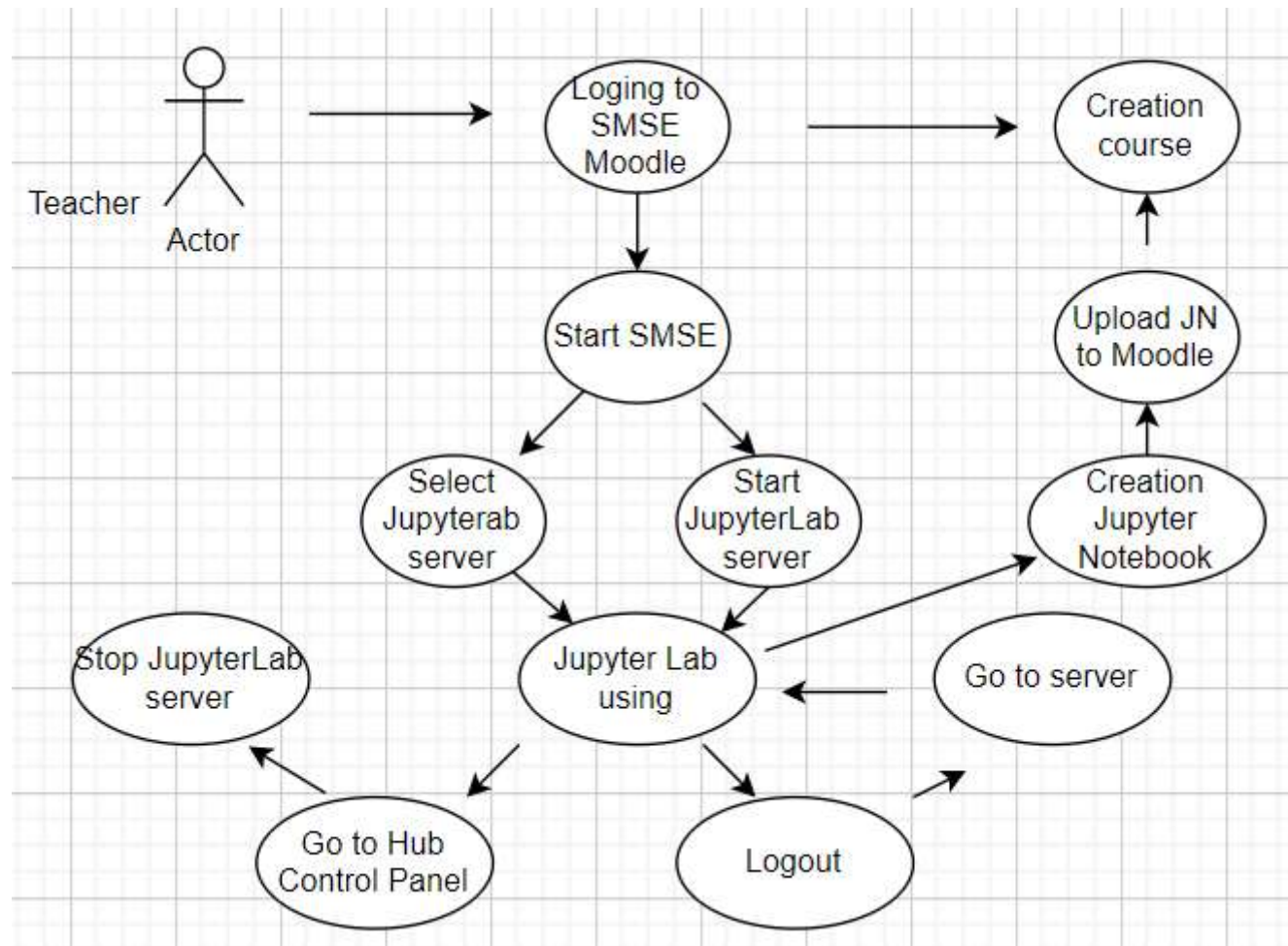
SMSE deployment diagram



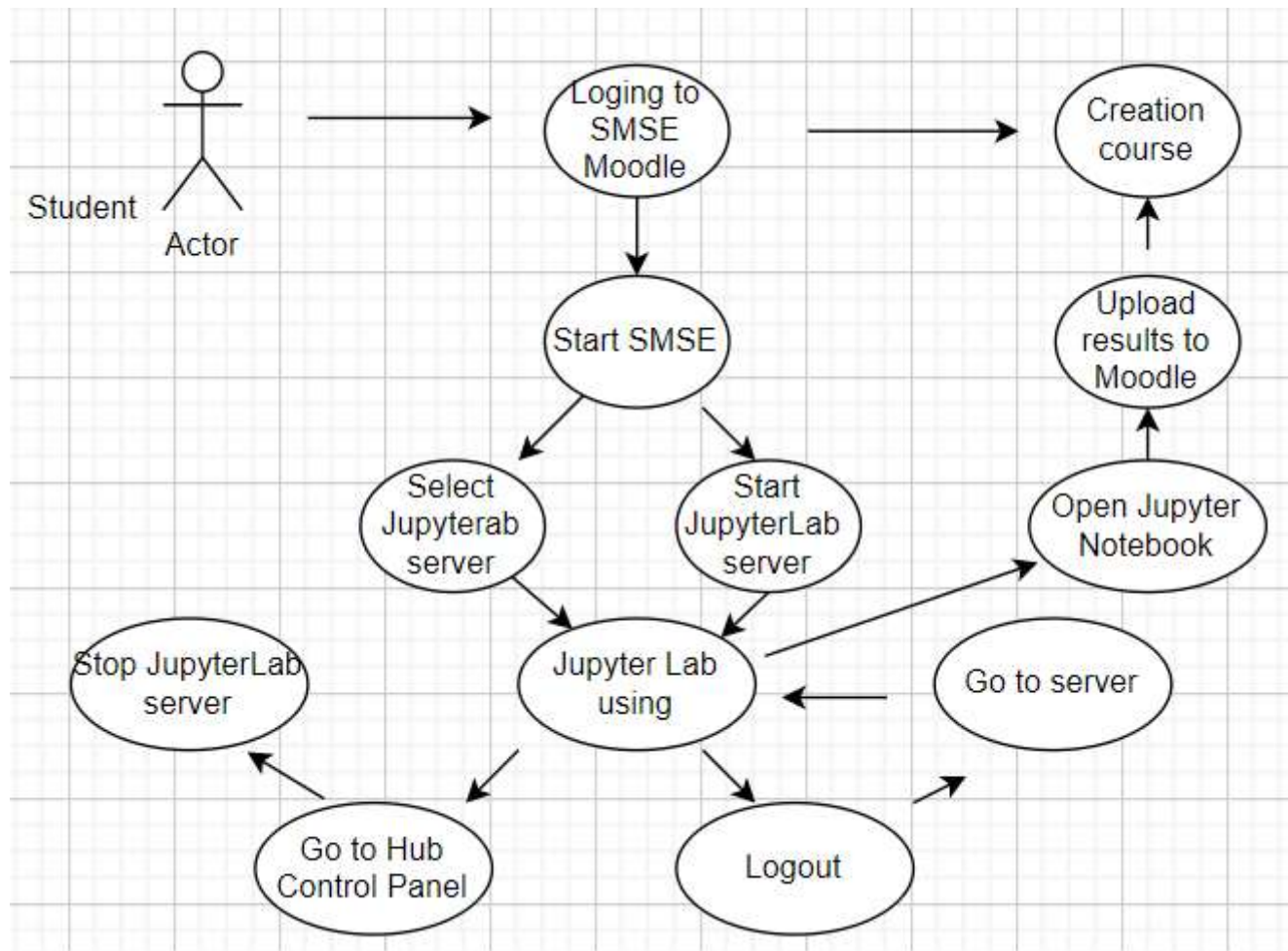
CPNU Moodle cases



Teacher's use cases



Student's use cases





Co-funded by the
Erasmus+ Programme
of the European Union

SMSE manual

- 1. SMSE architecture**
- 2. SMSE User's Guide**
- 3. Jupyter Notebook manual**



Co-funded by the
Erasmus+ Programme
of the European Union

Contact information:

**Chernihiv National University of Technology
14035, Ukraine, Chernihiv, Shevchenko Str., 95**

site: www.stu.cn.ua

CybPhys project contacts:

Volodymyr Kazymyr

tel. +38 050 344 43 77

e-mail: vvkazymyr@gmail.com